

**PRESCRIPTIVE METHOD FOR INSULATING CONCRETE FORMS  
6.0 - ICF Connection Requirements IN RESIDENTIAL CONSTRUCTION, Second Edition**

**TABLE 6.1  
FLOOR LEDGER-ICF WALL CONNECTION (SIDE-BEARING CONNECTION)  
REQUIREMENTS<sup>1,2,3</sup>**

MAXIMUM FLOOR CLEAR SPAN <sup>4</sup> (feet)	MAXIMUM ANCHOR BOLT SPACING <sup>5</sup> (inches)			
	STAGGERED 1/2-INCH-DIAMETER ANCHOR BOLTS	STAGGERED 5/8-INCH-DIAMETER ANCHOR BOLTS	TWO 1/2-INCH-DIAMETER ANCHOR BOLTS <sup>6</sup>	TWO 5/8-INCH-DIAMETER ANCHOR BOLTS <sup>6</sup>
8	18	20	36	40
10	16	18	32	36
12	14	18	28	36
14	12	16	24	32
16	10	14	20	28
18	9	13	18	26
20	8	11	16	22
22	7	10	14	20
24	7	9	14	18
26	6	9	12	18
28	6	8	12	16
30	5	8	10	16
32	5	7	10	14

For SI: 1 foot = 0.3048 m; 1 inch = 25.4 mm

<sup>1</sup>Minimum ledger board nominal depth shall be 8 inches (203 mm). The actual thickness of the ledger board shall be a minimum of 1.5 inches (38 mm). Ledger board shall be minimum No. 2 Grade.

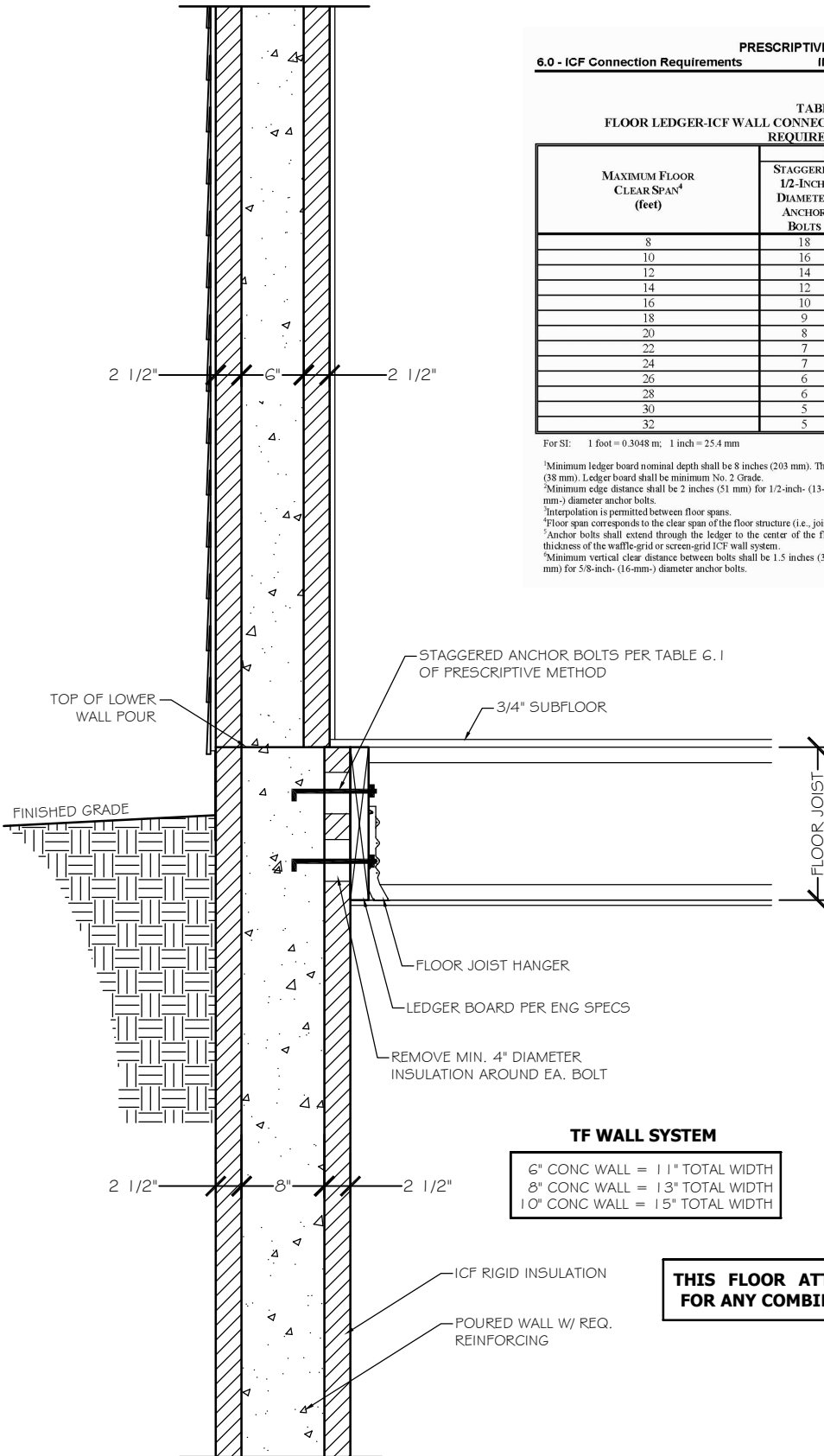
<sup>2</sup>Minimum edge distance shall be 2 inches (51 mm) for 1/2-inch- (13-mm-) diameter anchor bolts and 2.5 inches (64 mm) for 5/8-inch- (16-mm-) diameter anchor bolts.

<sup>3</sup>Interpolation is permitted between floor spans.

<sup>4</sup>Floor span corresponds to the clear span of the floor structure (i.e., joists or trusses) spanning between load-bearing walls or beams.

<sup>5</sup>Anchor bolts shall extend through the ledger to the center of the flat ICF wall thickness or the center of the horizontal or vertical core thickness of the waffle-grid or screen-grid ICF wall system.

<sup>6</sup>Minimum vertical clear distance between bolts shall be 1.5 inches (38 mm) for 1/2-inch- (13-mm-) diameter anchor bolts and 2 inches (51 mm) for 5/8-inch- (16-mm-) diameter anchor bolts.



**TF WALL SYSTEM**

6" CONC WALL = 11" TOTAL WIDTH  
8" CONC WALL = 13" TOTAL WIDTH  
10" CONC WALL = 15" TOTAL WIDTH

**THIS FLOOR ATTACHMENT METHOD IS VALID  
FOR ANY COMBINATION OF TF WALL THICKNESS**

**WALL SECTION (TYP.)**